



# World-Class Metal Forming

# Blue Grass Metals – Who We Are...

- Established in 1990
- 80,000 ft<sup>2</sup> Manufacturing Facility
  - (Expanding to 130,000 ft<sup>2</sup>)
- Contract Manufacturer for the Automotive and Industrial Markets with Metal Components and Assemblies
  - Toyota, GM, Ford, Honda, Nissan, Subaru, Chrysler, Tesla, BMW
  - El Dupont, Carlisle, Pemko, John Deere



# Blue Grass Metals – Who We Are...

## History

- **1990:** Established as a Family owned wire component manufacturing company in a 2,500 ft<sup>2</sup> facility in Florence, KY
- **1999:** Moved to a new 7,800 ft<sup>2</sup> facility in Walton, KY
- **2000:** First Automotive Program
- **2004:** Expanded to 22,000 ft<sup>2</sup>





# Blue Grass Metals – Who We Are...

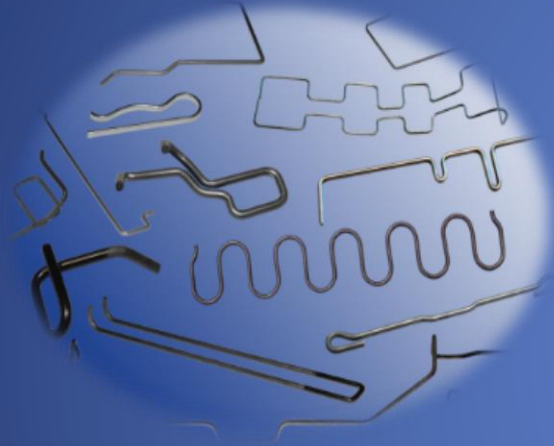
## History

- **2008:** Moved to a new 40,000 ft<sup>2</sup> facility in Independence, KY
- **2012:** Expanded to 50,000 ft<sup>2</sup>
- **2013:** Became Employee Owned
- **2015:** Celebrated 25<sup>th</sup> yr. Anniversary
- **2015:** Expanded to 80,000 ft<sup>2</sup>
- **2018:** Expanding to 130,000 ft<sup>2</sup>



# Industrial Components for Automotive, Consumer, Medical & Agriculture

Wire Forming



Value-Added Assembly



Stamping



Tube Fabrication



Components and Inserts



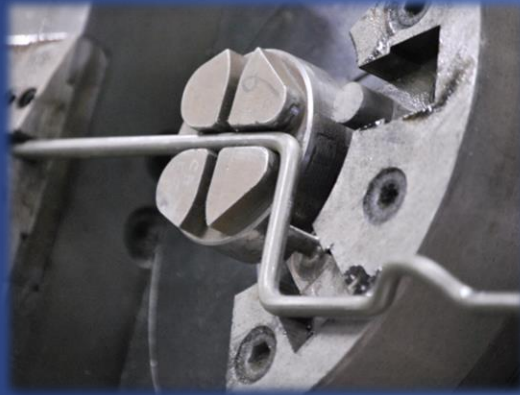
Cold Upsetting





# Quality Built-In

Quality is Built-In to Every Stage of the Manufacturing Process  
for Repeatable, Accurate Results, ISO 9001:2008



- High Frequency Sampling
- Effective Lot Control
- Poke-Yoke Reviews
- Responsive to Customer Needs
- Dedicated Sales Engineers



# Lean Manufacturing

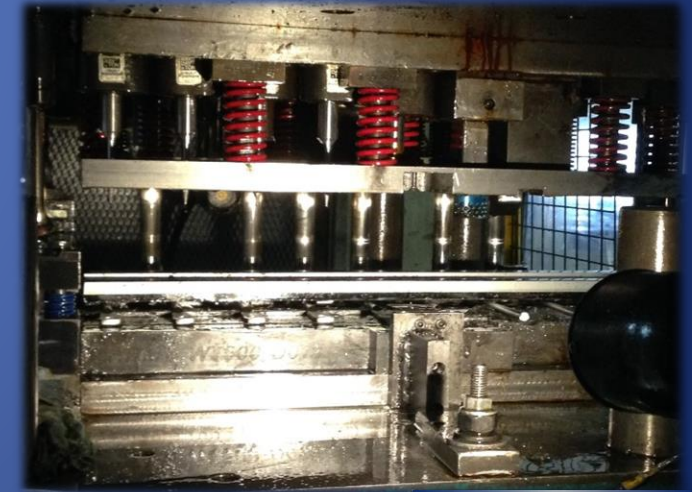
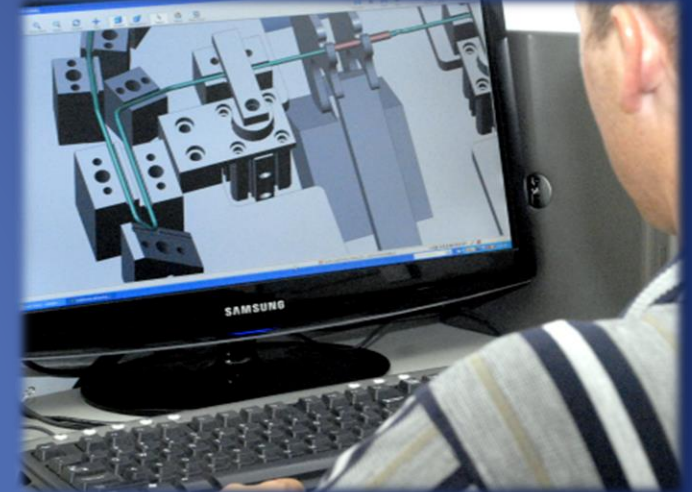
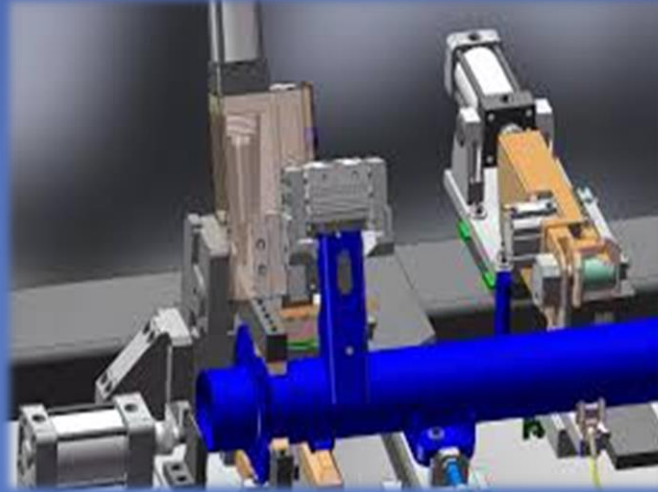
- Visual Factory Management System
- "Just-In-Time" Production Techniques
- Actual Demand Fluctuations are Met Real Time
- Flexible – Efficient
- Exceed Industry Standard Productivity Measures





# Engineering

- Tooling and Design
- Prototype
- Process Engineering
- Competitive Tolerances
- Best Fit – Best Value
- CAD Capabilities
  - iges, stp, dwg, catia





# Why Us...

- **Q**uality – Continuous Improvement
  - Winner of Supplier Quality awards
- **P**rice – Competitive
  - Winner of Supplier Cost reduction awards
- **D**elivery – 100% on Time
  - Winner of Supplier Delivery awards



**Of course...but**

# Advantage BGM

- Financially Strong and Balanced Company
  - Continuous Growth and Diversification
- Heavy Capital Investment
  - Technology Driven
- Scalable – Open Capacity
- Responsive
- Redundancy Plans
  - RISK Assessments > Equipment, Tooling, Inventory
- 100% Employee Owned





# Great Location to Serve You

We are located in Northern Kentucky approximately 5 miles from the Greater Cincinnati /Northern Kentucky Airport.

Minutes from I-75 / I-71



[www.bluegrassmetals.com](http://www.bluegrassmetals.com)

